



ACADEMY
— AT THE —
LAKES

OUR RETURN TO SCHOOL

FALL 2020



Dear Academy at the Lakes Families:

2020 has certainly been a year we will all remember. We will look back on this year and its challenges, and we will remember how our strong Academy at the Lakes community helped to support us and sustain us through the challenges of the coronavirus pandemic. We will remember how we leaned on one another and how, together, we would not let our students' education and growth suffer. We will remember our flexibility, creativity, and resilience, and we will know how the challenges we faced helped to build those characteristics in our children. We will look back with pride and satisfaction.

But before we are able to do that, we must continue to travel the road we set out on in March, we must continue the journey through the '20-'21 school year as broader events and circumstances may dictate.

The safety of every member of our community is our paramount goal.

We will remain vigilant, flexible, nimble, and responsive to prevailing conditions throughout the school year. We will serve our families and our entire community by adhering to the plans and policies set out in this document.

Thank you for your continued support and attention.

Sincerely,

Mark Heller
Head of School

BEING TOGETHER IS GOOD FOR CHILDREN

(AND ADULTS TOO)!

Academy's approach to the new school year aims to keep students as safe as possible while allowing them to resume the in-person, on-campus experience that we all value so much.

The American Academy of Pediatrics addresses this balance when it writes:

Policies to mitigate the spread of COVID-19 within schools must be balanced with the known harms to children, adolescents, families, and the community by keeping children at home.

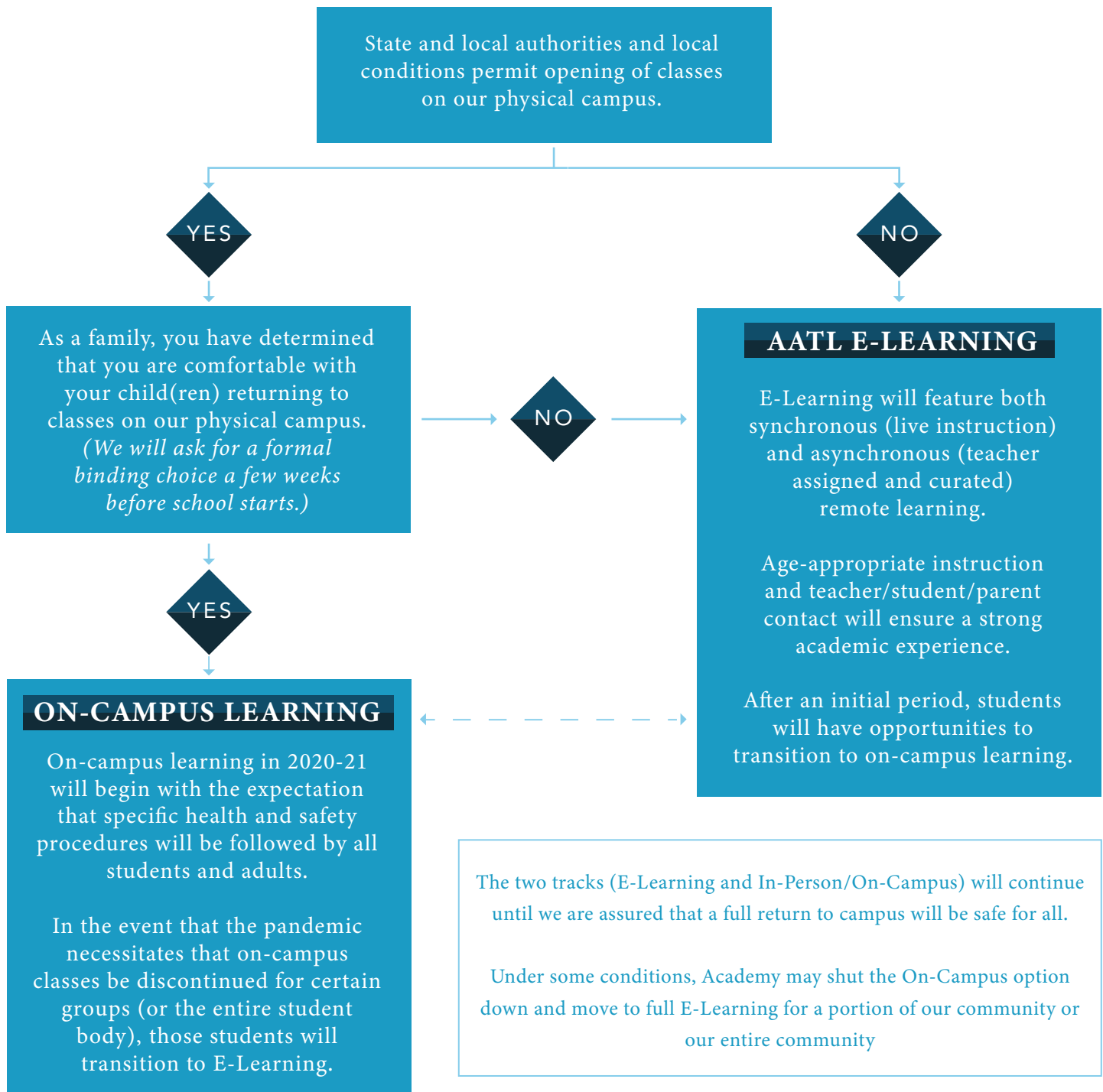
The American Academy of Pediatrics strongly advocates that all policy considerations for the coming school year should start with a goal of having students physically present in school.

Our plan follows the CDC and American Academy of Pediatrics guidelines.

Of course, for those families who are not yet comfortable with a return to campus, we are providing our E-Learning option that will keep at-home students very much in stride with the rest of the class. We will ask each family to tell us their preference (On-Campus or E-Learning), and will require you to remain with that choice for at least the first four weeks of school.

OUR TWO-TRACK SYSTEM

2020-2021 ACADEMIC FLOW CHART



What conditions would cause Academy to close facilities and move to full E-Learning?

We would move to full E-Learning if mandated by the Governor or recommended by the CDC or Health Department. There may be other scenarios that call for one class, one division, or the entire school to move to full E-Learning temporarily.

If we move to full E-Learning and it is appropriate to continue to provide Early Childhood services on campus, we will strive to do so.

HEALTH AND SAFETY

OUR HIGHEST PRIORITY

EXPOSURE

What happens if/when there is a confirmed COVID-19 case within the school community?

The school will receive notice of confirmed cases within our school community (including faculty, staff, students, or members of students' households) in two ways:

1. From the Pasco County Health Department; and/or
 2. Directly from a member of our community. If we are notified of a positive test for COVID-19 by a parent or staff member, we will call the Pasco County Health Department for direction.
- Academy will follow CDC and Health Department protocols to send infected or exposed individuals home.
 - Academy will follow CDC and Health Department protocols to sanitize or temporarily close any at-risk areas of campus.
 - Academy will work with the Health Department to conduct appropriate contact tracing to determine the need to close classrooms, divisions, or campuses and move to E-Learning.
 - Families will be notified of any known COVID-19 exposures.

EXPOSURE CONT.

Standards for Re-Entry

- The CDC recommends 14 days of quarantine after exposure, based on the time it takes to develop illness if infected.
- If an exposed individual has been quarantined for 14 days with no symptoms and produces a negative test at the conclusion of those 14 days, that individual may return to campus.
- If an individual receives a positive test, that individual may return to campus after a minimum 14-day quarantine period upon demonstrating to our nurse and administration:
 1. No fever for at least 72 hours (3 full days of no fever without having used fever-reducing medicine); and
 2. Significant improvement in respiratory symptoms; and
 3. Production of two negative tests in a row within the 72-hour fever-free period, those tests being at least 24 hours apart.

PREVENTION

Morning Drop-Off: Temperatures and The Three Questions

Each morning, a member of our staff will approach each car at drop-off and will take your child's temperature while the student remains in the car. Students whose temperatures reach 100.0°F will not be permitted to attend school that day.

The staff member will then ask drivers/parents to attest that their household and student are illness/symptom-free by answering "no" to the following questions:

PREVENTION CONT.

1. Does your child or anyone in the household currently have a cough, fever, chills, shortness of breath or difficulty breathing, muscle or body aches, sore throat, nasal congestion, new loss of smell or taste, diarrhea, headache, nausea or vomiting?
2. Has your child or anyone in your household been in close contact (less than 6 feet from another person for more than 2 minutes) with someone known to have COVID-19?
3. Has your child or family member traveled out-of-state or internationally in the last 14 days?

If the answer to any of these questions is “yes,” the nurse will follow-up and make a determination of appropriate school measures based on the facts and circumstances of each situation.

Hand Hygiene

- Students will begin each day by washing their hands.
- There will be hand-washing added to all of our daily routines.
- The school has added hand washing stations.
- Hand hygiene education and signage will be part of our experience.
- Hand sanitizer will be present throughout the school. Individuals are encouraged to bring their own. Remember, hand sanitizer does not replace the need for good hand washing!

Minimizing Groups and Group Size **(The American Academy of Pediatrics calls this “Cohorting”)**

Lower Division:

- Grade-level and class groups will be kept together as much as possible.
- Specials instruction (except for P.E.) will be rotated to minimize exposure.

Middle and Upper Divisions:

- All students will follow the Block Schedule.
- Locker use will be discontinued.

Equipment

- Materials and manipulatives will not be shared.
- Playground structures will be designated for particular groups and will be wiped down/cleaned multiple times each day with an antimicrobial cleaning product.
- Recreational and athletic equipment will be cleaned and sanitized according to protocols developed by the manufacturers, the National Federation of State High School Associations (NFHS), and the Sports Medicine Advisory Committee of the Florida High School Athletic Association (FHSAA).

Housekeeping

- Custodial staff members will be assigned during the day to:
 - Clean/disinfect all high touch areas of campus; and
 - Ensure adequate supplies for proper hand hygiene (soap, paper towels, hand sanitizer, surface sprays, etc.).
- Bathrooms (including classroom bathrooms) will be cleaned, disinfected, and mopped twice per day and as needed. Completion sign off sheet will be in each bathroom.

PREVENTION CONT.

Housekeeping Cont.

- The school is adding:
 - Hand washing stations
 - Touchless soap dispensers
 - Touchless paper towel dispensers
 - Anti-viral UV light sanitation in every air conditioning unit throughout the school
 - Additional custodial personnel to meet our needs

Distancing

- Classroom configurations and furnishings have been altered to enable social distancing that meets AAP and CDC guidelines.
- Students will travel through shared spaces using specific movement paths/patterns.

Utilizing the Outdoors

- Teachers will utilize the outdoors as much as is possible and comfortable.
- The school has added additional covered areas to increase the availability of appropriate outdoor space.

Masks and Face Coverings

All members of the community (students, teachers, staff, parents, and visitors) are required* to wear cloth face coverings that cover the nose and mouth while on campus and indoors.

Science has taught us that masks do not protect the wearer as much as they protect the rest of the community. Our mask requirement is a pro-community choice! If everyone does their part, we will keep our community as safe as can be. Each family is required to supply their own masks.

Masks and Face Coverings Cont.

Teachers will provide mask breaks, during which students will be able to go outside.

**Medical exceptions will be considered and made in consultation with our nurse, Michelle Prade. Please direct inquiries about the standards for seeking an exception to her at mprade@academyatthelakes.org.*

Mask Design Standards

All face coverings (masks or buffs) should be layered cloth.

- Acceptable: solid colors, patterns, school-branded themes (AATL or college), teams (Rays, Bucs, Lightning, etc.)
- Not Acceptable: “scary” patterns/images, messages, symbols, icons

Parents, Volunteers, and Visitors

All parents, volunteers, and visitors who come to campus will be expected to wear masks that cover their nose and mouth.

Temperatures at School

Any member of the community (students, teachers, or staff) who presents a temperature of 100.0°F will be immediately isolated and sent home. The nurse will continue follow-up and make a determination of appropriate school measures based on the facts and circumstances of each situation.

LOWER DIVISION

ON-CAMPUS LEARNING

On-Campus learning at the Lower Division level will look very much like it would during a “normal” time period. However, we will be implementing a number of changes to our routines to mitigate the risk of anyone contracting COVID-19.

- We will institute many mask breaks each day.
- Classroom spaces will be reorganized to allow students to spread out within the room to maintain distancing during learning activities.
- Students MUST bring in their own re-usable water bottle. Our water fountains have bottle filling capabilities and students will not be allowed to drink directly from the water fountains.
- Please send in a floor mat of some kind since students may be sitting on the floor more often (as we spread out around the room). The floor mat should be wipeable.
- Handwashing routines will be incorporated throughout the day, many times a day.
- Temperatures will be taken upon arrival to school and then again mid-day.
- Arrival procedures will not allow parents to bring students to classrooms – adults should not get out of cars. The exception to this will be adults who need to unbuckle car seats, as teachers will no longer reach into cars to unbuckle seatbelts. Cars that need to unbuckle should make a second row to the right at the bottom of the hill (closest to where teachers cars are parked – furthest away from the front door of the school) and wait for assistance from faculty to chaperone students to the building.
- We are developing plans for how to safely have division assemblies.
- More specific information will be forthcoming as we get closer to the start of the school year.

E-LEARNING

Here is a sample schedule for what Lower Division students might experience if they are learning from home. Be advised, this is just a sample, and all classes, recess, lunch, and breaks will be at different times depending on the grade level:

8:15-8:30: Morning meeting (zoom)
8:30-9:00: Language Arts (zoom)
9:00-9:30: Independent work for Language Arts
9:30 – 10:00 – Break
10:00-10:30: Math (zoom)
10:30-11:00: Independent work for math
11:00-11:30: Recess/Social zoom

11:30-12:00: Lunch
12:00-12:30: Science (zoom)
12:30-1:00: Independent work for science
1:00-1:30: Specials (zoom)
1:30 -3:00: One on one teacher check ins (twice weekly for each student) zoom

MIDDLE & UPPER DIVISIONS

THE SCHEDULE

Middle and Upper Divisions will follow our Block Schedule every day. This will minimize the number of classes and contacts each student will have on a daily basis. (This is aligned with the CDC and AAP recommendations). There will be mask breaks within each 90-minute class period.

Students participating in E-Learning will follow the same schedule as their On-Campus peers.

We will alternate “A” Days and “B” Days.

“A” Day

8:00 – 9:30	Block 1A
9:30 – 9:50	Break/Transition
9:50 – 11:20	Block 2A
11:20 – 1:25	Lunch and Block 3A
1:25 – 1:45	Break/Transition
1:45 – 3:15	Block 4A

“B” Day

8:00 – 9:30	Block 1B
9:30 – 9:50	Break/Transition
9:50 – 11:20	Block 2B
11:20 – 1:25	Lunch and Block 3B
1:25 – 1:45	Break/Transition
1:45 – 3:15	Block 4B

LUNCH

Lunch will be staggered so that we can both spread out and maintain smaller groupings to ensure social distancing and safety. We have created more covered areas to also serve this purpose. The groups assigned to the various lunch shifts will rotate and change until we are able to return to campus-wide shared lunch time.

Seniors are not permitted to go off campus for lunch until we deem it safe for them to do so.

Lunch may be brought from home or ordered through our new list of vendors (one vendor per day). Students are not permitted to place individual orders for delivery from local establishments. This allows us to limit the number of deliveries to campus. Our support personnel will receive the large order from each day’s vendor, and our staff will distribute those lunches to our students.

ASSEMBLIES/MORNING MEETING

Assemblies and Morning Meeting are a significant part of our culture. As such, we are working hard to develop plans for our community to come together virtually to maintain the connections we make through these shared experiences.

PHYSICAL EDUCATION

- During this period of social distancing, students will not change into P.E. uniforms.
- All activities in P.E. will follow social distancing guidelines.
- Equipment used will not be shared between students and will be cleaned/sanitized immediately after the conclusion of class.

ATHLETICS

At this point in time (July 2020) there is still much uncertainty about interscholastic sports in Florida for the 2020-21 school year. We will continue to follow the updates sent out by our governing body, the Florida High School Athletic Association (FHSAA). We will assess and weigh our school’s participation based on the facts and circumstances that exist throughout the year. If we do not participate in interscholastic competitions, we will strive to create and operate intramural activities for our students.



*Academy at the Lakes is a learning community
of shared values, dedicated to the success of each
individual at school, in the community,
and in the world.*

The basic, underlying concept of community means that we each give a little so that we all get a lot. “Community” rejects the idea of “Every person for him/herself.”

Our teachers, administrators, and staff have worked hard to create these policies and procedures that are designed to promote safety at school. But we only have control over those hours that we are on campus. All of the care we take to ensure safety at school can be undone by choices our students, families, and staff make when they are **not** at school. In the name of the health of our entire community, we encourage all Academy families and employees to follow social distancing, to wear masks, to keep their contact lists as small as possible, and to take other protective measures during this challenging time **even when they are on their own and outside of school.**

Our behavior outside of school comes into school each and every day.

Through our partnership we will reduce our risk. Please help our entire community stay safe and healthy by making careful and care-filled choices.

*We celebrate the love of learning
and the joy in the journey.*